

TECHNICAL SPECIFICATIONS
HIAB X-HIDUO 092

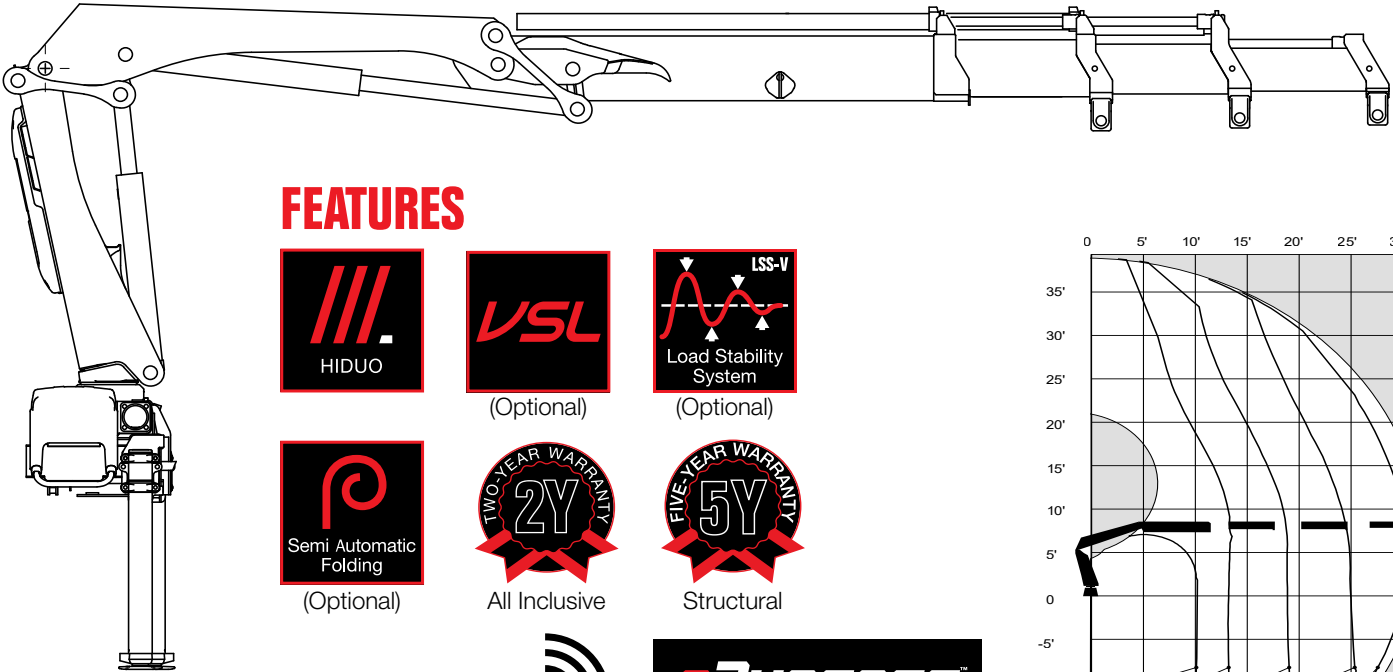


BUILT TO PERFORM

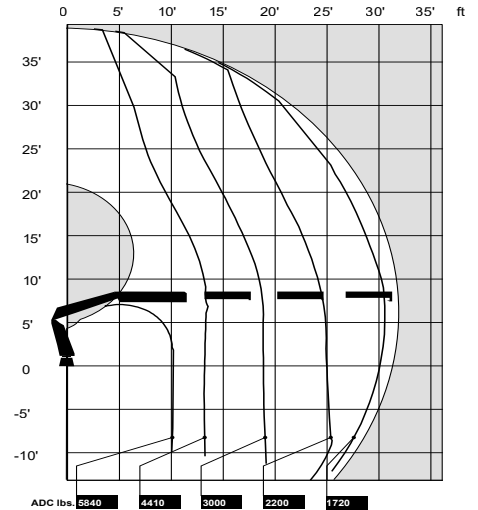
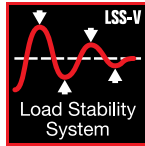


HIAB X-HIDUO 092 BASIC DATA

TECHNICAL DATA	X-HIDUO 092 B-1	X-HIDUO 092 B-2	X-HIDUO 092 B-3	X-HIDUO 092 E-4	X-HIDUO 092 E-5
Max. lifting capacity (ft-lbs)	61 940	58 970	56 800	56 800	52 380
Outreach, hydraulic extensions (ft)	18' 8"	25' 3"	31' 10"	38' 1"	44' 11"
Outreach, manual extensions (ft)	31' 10"	38' 9"	38' 9"	44' 11"	-
Outreach / lifting capacity (ft-lbs)	8' 10" - 7 050 12' 6" - 4 960 17' 9" - 3 530 - - -	9' 6" - 6 390 12' 6" - 4 630 17' 9" - 3 260 23' 11" - 2 380 - -	10' 2" - 5 840 12' 10" - 4 410 18' 1" - 3 000 23' 11" - 2 200 30' 2" - 1 680 -	7' 3" - 7 720 13' 9" - 4 100 19' 0" - 2 780 25' 3" - 1 980 31' 6" - 1 500 38' 1" - 1 230 -	7' 3" - 7 170 14' 1" - 3 880 19' 4" - 2 600 25' 7" - 1 760 31' 10" - 1 320 38' 5" - 1 060 44' 11" - 880
Slewing angle (°)	190 - 406	190 - 406	190 - 406	190 - 406	190 - 406
Height in folded position (in)	79	79	79	79	79
Width in folded position (in)	87	91	94	91	94
Installation space needed (in)	31	31	34	33	35
Weight, "standard" crane without stabilizers (lbs)	2 140	2 380	2 580	2 780	2 950
Weight, stabilizer equipment (lbs)	340 - 670	340 - 670	340 - 670	340 - 670	340 - 670
Weight, jib (lbs)	-	-	-	-	-



FEATURES



Disclaimer. Hiab cranes have been built to meet the highest standards of safety and service life and have been thoroughly tested. Strength calculations for this model have been carried out in accordance with EN13001 in fatigue class S2. Cargotec's certified Quality Assurance System complies with ISO 9001. Some of the items in our literature may be extra equipment. Certain applications may require an official permit. We reserve the right to change technical specifications without prior notice. Hiab cranes produced for EU-countries are CE marked and comply with the European Standard EN12999.

Hiab is the world's leading provider of on-road load handling equipment. Our high performance product range includes loader cranes, forestry and recycling cranes, demountables, truck mounted forklifts and tail lifts. We aim to set the industry benchmark for customer satisfaction by providing products and services that meet customer needs globally.

www.hiab.us.com
Hiab is part of Cargotec.
www.cargotec.com

Hiab USA Inc
12233 Williams Road
Perrysburg, OH 43551 USA
tel. +419 482 6000
fax. +419 482 6001

