



EFFER ix.550 HP

TECHNICAL SPECIFICATION

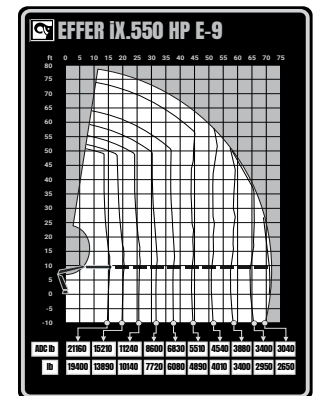
EFFER iX.550 HP

TECHNICAL DATA	iX.550 HP E-6	iX.550 HP E-6 / JIB 150X-4	iX.550 HP E-6 / JIB 150X-6	iX.550 HP E-7	iX.550 HP E-8	iX.550 HP E-9
Max. lifting capacity (ft-lbs)	340 720			336 310	331 170	327 480
Outreach, hydraulic extensions (ft)	36' 1"			43' 0"	49' 6"	56' 3"
Outreach, with jib (ft)	-	78' 1"	90' 7"	-	-	-
Outreach / lifting capacity (ft-lbs)	14' 5" - 23 590	14' 5" - 23 590	14' 5" - 23 590	15' 1" - 22 270	15' 1" - 21 830	15' 5" - 21 160
	19' 4" - 17 200	19' 4" - 17 200	19' 4" - 17 200	20' 0" - 16 090	20' 0" - 15 870	20' 4" - 15 210
	24' 11" - 12 790	24' 11" - 12 790	24' 11" - 12 790	25' 7" - 11 900	25' 7" - 11 680	25' 11" - 11 240
	30' 10" - 10 030	30' 10" - 10 030	30' 10" - 10 030	31' 6" - 9 370	31' 6" - 9 040	31' 10" - 8 600
	36' 9" - 8 270	36' 9" - 8 270	36' 9" - 8 270	37' 5" - 7 610	37' 5" - 7 280	37' 9" - 6 830
	43' 4" - 6 830	43' 4" - 6 830	43' 4" - 6 830	44' 0" - 6 260	44' 0" - 5 910	44' 3" - 5 510
	50' 2" - 5 910	50' 2" - 5 910	50' 2" - 5 910	50' 10" - 5 290	50' 10" - 4 940	51' 2" - 4 540
	-	-	-	57' 5" - 4 630	57' 5" - 4 280	57' 9" - 3 880
	-	-	-	-	64' 4" - 3 790	64' 8" - 3 400
	-	-	-	-	-	71' 2" - 3 040
Outreach / lifting capacity, with jib (ft-lbs)	-	60' 0" - 2 730	61' 4" - 2 340	-	-	-
	-	64' 4" - 2 510	65' 7" - 2 120	-	-	-
	-	68' 7" - 2 290	69' 11" - 1 920	-	-	-
	-	73' 2" - 2 140	74' 6" - 1 760	-	-	-
	-	78' 1" - 2 010	79' 5" - 1 610	-	-	-
	-	-	85' 0" - 1 480	-	-	-
Slewing angle (°)	Continuous	Continuous	Continuous	Continuous	Continuous	Continuous
Height in folded position (in)	98	100	100	98	98	98
Width in folded position (in)	99	99	99	99	99	100
Installation space needed (in)	69	73	73	69	69	73
Weight, "standard" crane without stabilizers (lbs)	10 780	13 460	13 830	11 270	11 700	12 100
Weight, stabilizer equipment (lbs)	1 880 - 2 360	1 880 - 2 360	1 880 - 2 360	1 880 - 2 360	1 880 - 2 360	1 880 - 2 360

Features

- HP-Drive remote control system
- VSL: Variable Stability Limit (Optional)
- LSS-V: Load Stability System
- SAF: Semi Automatic Folding
- HiConnect
- nDurance™ nano technology coating

- 1 Year warranty - All inclusive
- 3 Year warranty - Structural



Hiab is a leading provider of smart and sustainable load handling solutions. We are committed to delivering the best customer experience every day with the most engaged people and partners. Hiab's premium equipment includes HIAB, EFFER and ARGOS loader cranes, MOFFETT and PRINCETON truck mounted forklifts, LOGLIFT forestry cranes, JONSERED recycling cranes, MULTILIFT skiploaders and hooklifts, GALFAB roll-off cable hoists, and tail lifts under the ZEPRO, DEL and WALTCO brands. As the industry pioneer, Hiab continues to make load handling smarter, safer and more sustainable to build a better tomorrow.



Hiab USA, Inc.
 12233 Williams Rd
 Perrysburg, 43551 OH USA
 tel. +419 482 6000