

# TAIL LIFT OPTIONS



## ENHANCE PRODUCTIVITY AND OPTIMISE SAFETY

ZEPRO tail lifts combine industry-leading innovation and durability to optimise each working day. Tailor your lift with options that help to increase uptime, deliver precision accuracy, and minimise risk for the operator and the environment.



### UNIVERSAL CONTROL UNIT

Latest generation control unit combining user friendliness and safety with quick and easy installation. Moulded in one piece for increased lifespan. Suitable for installation on the box body or, using optional brackets, recessed into or bolted underneath it.



### 3+1 BUTTON CONTROL UNIT

Two piece control unit with 3+1 buttons suitable for installation on the box body. Installation under the box body or recessed into the box body is possible with optional brackets.



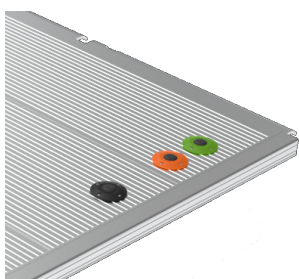
### CONTROL UNIT WITH INTEGRATED POWER SWITCH

A control unit box with integrated main power switch, a rotary selector for 2-hand safety functionality and a lockable plastic cover. Suitable for installation under the box body.



### SPIRAL CONTROL DEVICE

A control unit with a spiral cable designed for installation inside the box body. Reachable from the platform, the unit allows for safe and user friendly tail lift control.



### FOOT CONTROL DEVICE

Platform mounted foot activated control units allow for a hands-free control of the tail lift. Especially effective when combined with auto tilt functionality.



### RADIO CONTROL DEVICE, EXTERNAL

Radio control unit with ergonomic hand-held transmitter which can be clipped onto a belt or a trouser pocket. Provides the ability to control the tail lift without constraints to the operators position.



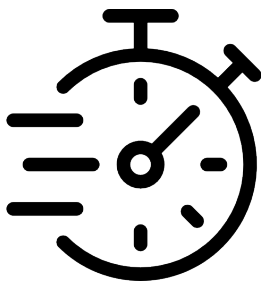
### RADIO CONTROL DEVICE, INTEGRATED

Radio control unit with ergonomic hand-held transmitter which can be clipped onto a belt or a trouser pocket. Quick and simple installation and pairing with a on-card receiver module. Provides the ability to control the tail lift without constraints to the operators position.



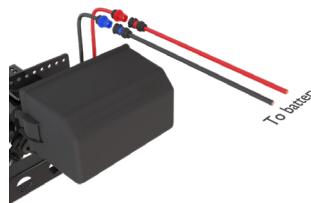
### AUTO TILT

During lowering, the auto tilt function tilts the platform down upon reaching ground level. During raising, it returns it to horizontal before lifting. The function operates automatically, with no user input and is available in electrical or hydraulic versions depending on the model.



### QUICK OPENING

Significantly increases the opening speed of the tail lift from fully closed to horizontal, thus increasing the operational efficiency at each stop.



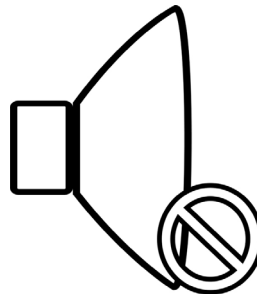
### PLUG-AND-PLAY POWER CABLES

Quick connections on the power cables facilitate a quick and easy installation. Can be combined with a VDHH interface for an even quicker installation on supported vehicles.



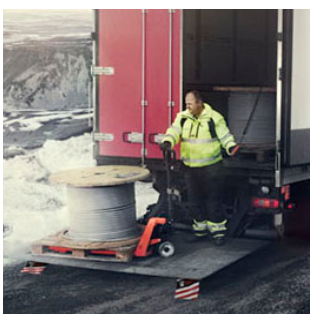
### PLUG-AND-PLAY POWER SWITCH

A main power switch with plug and play cables for quick and easy installation and retrofitting. Designed for installation underneath the box body and used to cut power to the tail lift to prevent unwanted battery discharge and unauthorized operation.



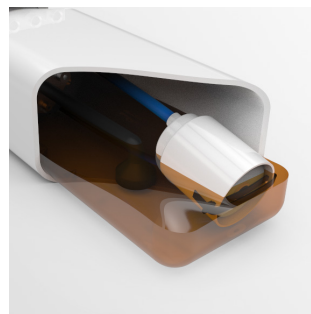
### LOW NOISE POWERPACK

Reduces the noise pollution coming from the motor and pump of the tail lift to levels more acceptable for night-time operation.



### HOSE OVER BEAM

ZEPRO supplies hoses under the beam as a standard solution. If hoses above the beam are a preferred solution, this can be supplied as well.



### CLEAROIL FILTER

The ZEPRO Clearoil Filter collects dirt, contaminations and condensation, and prevents the formation of ice particles in cold weather. Thereby extending the oil change interval from one to three years.



### **ADJUSTABLE TILT CYLINDERS**

Adjustable tilt cylinders allow for the maximum down tilt angle to be limited to the statutory -10 degrees and for the pressure that the platform exerts on the box to be controlled



### **RUBBER BELLOWS**

Rubber bellows on the tilt and lift cylinders provide protection for the cylinder rods and ensure maximised uptime and longevity.



### **OPEN PLATFORM ALARM**

An in-cab warning light that warns the driver if the platform is not fully closed.



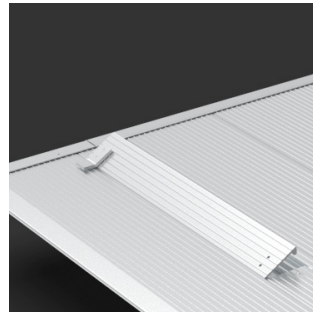
### **POWDER SURFACE TREATMENT**

Premium quality, corrosion protection and long term reliability.



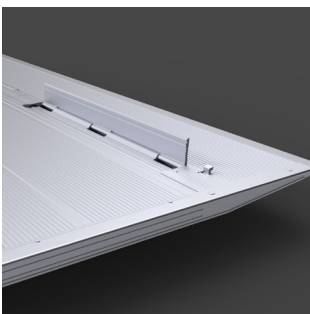
### **GALVANIZED STRUCTURE**

Galvanized steel structure for long lasting corrosion protection.



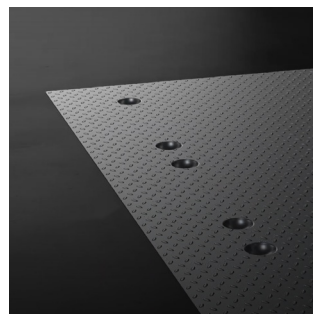
### **ROLLSTOPS, ANGLED**

A must if you have loads on wheels. Built in rollstops provide effective protection for both goods and employees.



### **ROLL STOPS, 90 DEGREE**

A must if you have loads on wheels. Built in 90-degree rollstops provide effective protection for both goods and employees.



### **ROLL STOPS, BOWL SHAPED**

A must if you have loads on wheels. Built in bowl-shaped rollstops provide effective protection for both goods and employees.



### **WARNING LIGHTS**

Increase safety and be seen while loading and unloading with warning lights. These can be mounted on the lift and are activated automatically when the platform is lowered to a horizontal position.



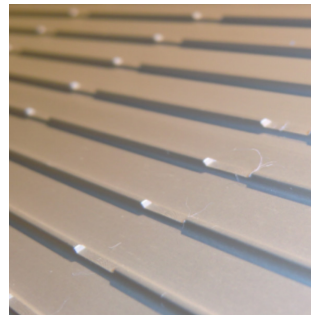
### **YELLOW FEET AND SAFETY LINE**

Yellow feet markings clearly indicate the operator's position on the platform, reducing the risk of accidents. Can be further enhanced by a yellow line along the platform's edges enhancing contrast with the ground



### **ZINC ANTI SLIP COATING**

Corrosion and anti-slip protection. Available for steel platforms.



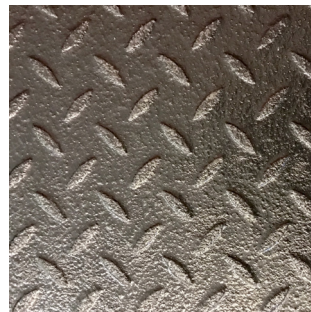
### **MACHINE ANTI SLIP**

Sprayed anti-slip coating for increased operator safety in slippery conditions.



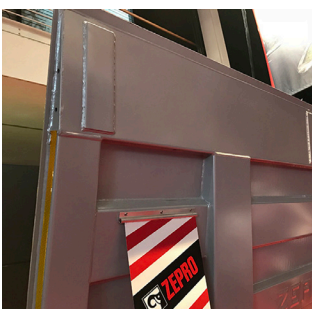
### **ANODIZED PLATFORM**

Platform treatment for a durable, corrosion-resistant surface.



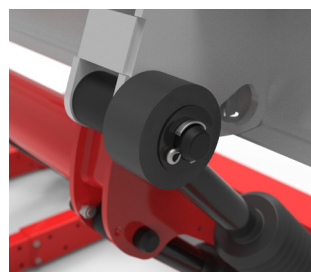
### **PIEK NOISE REDUCTION COATING**

A coating applied to the top surface of the platform which reduces the noise pollution of the tail lift to legally acceptable levels for night-time operation.



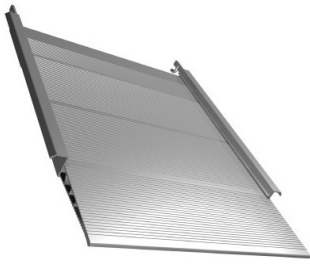
### **WEAR PLATES**

Stainless steel wear plates welded onto the bottom of the platform near the tip protect the it from damage caused by contact with the ground. This reduces the wear on the platform and increases its lifespan significantly.



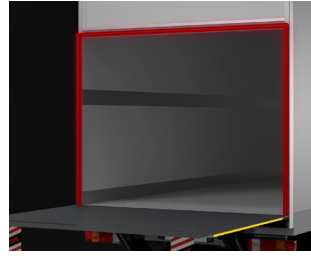
### **SUPPORT WHEELS**

These strong and robust support wheels help to protect the platform when it is resting on the ground.



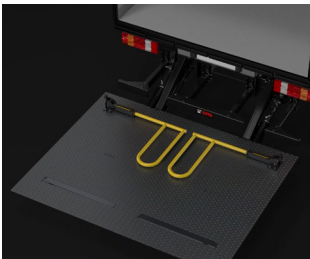
### SIDE LOADING RAMP

Aluminium side loading ramps make it possible to load from the platform side and even from docks and pavements. The ramps are available in several sizes.



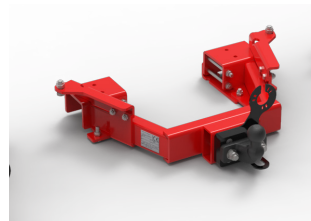
### HEAVY DUTY SEAL SYSTEM

A full sealing system which allows the platform to fully seal the box body without the use of doors.



### SAFETY GATES

Versatile, multifunctional barriers reduce the risk of operator injury while offering the flexibility needed for efficient operations.



### TOW HOOK

A tow hook with 50 mm ball, alternatively a triplex coupling, for towing of trailers with total weight of up to 3.500 kg. Available for the Z75-family of tail lifts.



### ADR EXIII

Additional protection on the cables allowing the tail lift to be used on vehicles which are used to transport dangerous goods



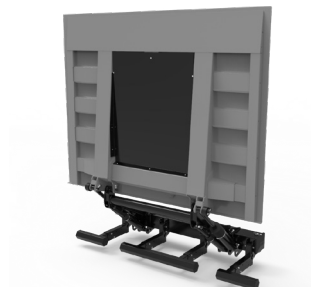
### STEEL PLATFORM

Stable and robust steel platform, engineered for maximum durability and reliability. This platform ensures safe, stable and efficient operations whether used for heavy loads or in tough environments.



### ALUMINIUM PLATFORM

Light weight and corrosion resistant aluminium platform. Provides significant weight reduction compared to a steel platform while preserving its stability and reliability.



### ADVERTISEMENTS PLATE

A plate that provides flat surface onto which advertisements can be placed. Designed for quick and easy installation by means of rivets. Easily retrofitable.



### **SAFETY FLAGS**

Reflective warning flags installed on the bottom of the platform used to increase the visibility of the platform when in its horizontal position.



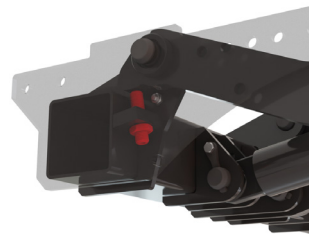
### **FOOTSTEPS**

Safe and convenient foot-steps mounted on the under-run protection device or, in the case of the ZHZ, on the tail lift itself. Easily to install and retrofit.



### **GUIDEBAR WITH INTEGRATED ARM STOPS**

Aluminium guidebar with integrated arm stops for quick and easy installation. Equipped with a sealing strip in rubber to allow for full seal against the box body when used in conjunction with the side and top seal. Used for limiting the travel of the platform to the correct height.



### **INTEGRATED ARMSTOPS**

Adjustable arm stops integrated in the tail lift structure for minimal installation time. Used for limiting the travel of the platform to the correct height.

Hiab is a leading provider of smart and sustainable load handling solutions. We are committed to delivering the best customer experience every day with the most engaged people and partners. Hiab's premium equipment includes HIAB, EFFER and ARGOS loader cranes, MOFFETT and PRINCETON truck mounted forklifts, LOGLIFT forestry cranes, JONSERED recycling cranes, MULTILIFT skiploaders and hooklifts, GALFAB roll-off cable hoists, tail lifts under the ZEPRO, DEL and WALTCO brands, and HIPERFORM, a suite of smart solutions. As the industry pioneer, Hiab continues to make load handling smarter, safer and more sustainable to build a better tomorrow. Hiab is part of Cargotec Corporation.

[www.zepro.com](http://www.zepro.com)



	ZHZ 500/600	Z3N 75	Z 75	Z 100	Z 15/20	Z 1500/2000 & ZDK 250	ZA(E)HD 150/200	ZS(S) 150/200/250	ZT(S) 200/250	Z 2500	ZN 2500	ZHD 3000
Universal control unit	S	S	S	S		S	S	S	S	S	S	
3+1 button control unit	O	O	O	O	O	O	O	O	O	O	O	S
Control unit with integrated power switch and rotary selector					S							
Spiral control device	O	O	O	O	O	O	O	O	O	O	O	O
Foot control device		O	O	O	O	O	O	O	O	O	O	O
Radio control device, external	O	O	O	O	O	O	O	O	O	O	O	O
Radio control device, integrated		O	O	O		O	O	O	O	O	O	O
Auto tilt, electronic	O	O	O	O		O	O	O	O	O	O	
Auto tilt, hydraulic			O		O							O
Quick opening		S				S				S	S	S
Plug and play power cables		O	O	O		S	S	S	S	S	S	S
Plug and play power switch		O	O	O		O	O	O	O	O	O	O
Low noise powerpack					O							
House over beam						O		S	S			O
Clearoil filter	M	M	M	M	M	M	M	M	M	M	M	M
Adjustable tilt cylinders					O	S	S			S	S	S
Rubber bellows on cylinders	S	S	S	S		S	S	S	S	S	S	S
Open platform alarm	S	S	S	S	O	S	S	S	S	S	S	S
Powdercoated structure	S	S	S	S	S	S	S	S	S	S	S	S
Galvanized structure			O		O	O						
Roll stops, angled (alu. pl. only)	O	O	O	O	O	O	O	O	O			
Roll stops, 90 degree	O	O	O	O	O	O	O	O	O	O	O	O
Roll stops, bowl shaped	O	O	O	O	O	O	O	O	O	O	O	O
Warning lights	O	O	O	O	O	O	O	O	O	O	O	O
Yellow feet and safety line	O	O	O	O	O	O	O	O	O	O	O	O
Zink anti slip coating (steel. pl. only)					O	O	O	O	O	O	O	O
Machine anti slip (alu. pl. only)	O	O	O	O	O	O	O	O	O	O		
Anodized platform (alu. pl. only)	O	O	O	O	O	O	O			O		
Piek anti noise coating	O	O	O	O	O	O	O	O	O	O	O	O
Stainless steel wear plates under tip (steel. pl. only)					O	O	O			O	O	O
Support wheels	S	S	S	S	O	S	S	S	S	S	S	S
Side loading ramp					O	O	O	O	O	O	O	O
Heavy duty sealing system	O	O	O	O	O	O	O	O	O	O	O	O
Safety gates		O	O	O	O	O	O	O	O	O	O	O
Tow hook			O									
ADR EXII						O	O			O		
Steel platform					S	S	S			S	S	S
Aluminium platform	S	S	S	S	O	O	O	S	S			
Advertisement plate						O	O					
Safety flags	S	S	S	S	S	S	S	S	S	S	S	S
Footsteps	O				O	O	O			O	O	O
Guidebar with integrated arm stops		O	O									
Integrated arm stops	S											

S = included as Standard  
O = available as an Option  
M = Market specific (standard in some markets, optional in others)