

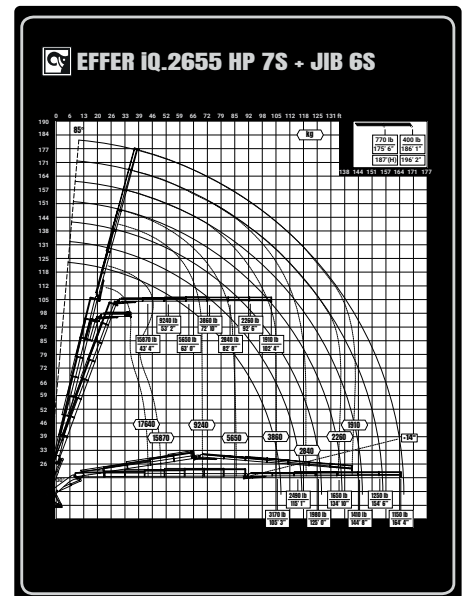
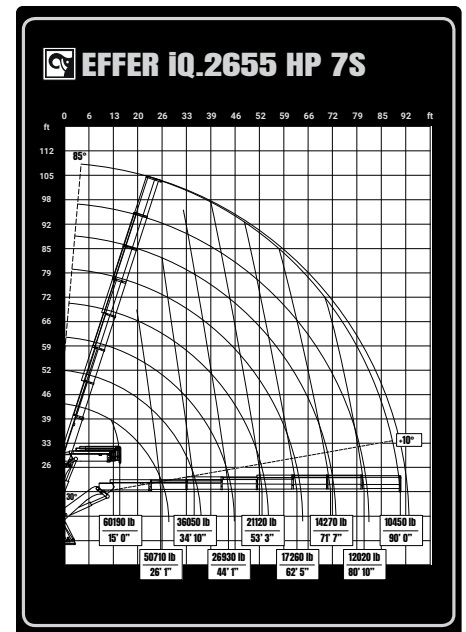


EFFER iQ.2655 HP

TECHNICAL SPECIFICATION

EFFER iQ.2655 HP

TECHNICAL DATA	iQ.2655 HP 7S	iQ.2655 HP 7S JIB 6S
Max. lifting capacity (ft-lbs)	1 325 450	1 330 170
Outreach, hydraulic extensions (ft)	90	-
Outreach, jib extensions (ft)	-	164
Outreach / lifting capacity (ft - lbs)	15' 0" - 60 190	15' 0" - 60 190
	26' 1" - 50 710	26' 1" - 50 710
	34' 10" - 36 050	34' 10" - 36 050
	44' 1" - 26 930	44' 1" - 26 930
	53' 3" - 21 120	53' 3" - 21 120
	62' 5" - 17 260	62' 5" - 17 260
	71' 7" - 14 270	71' 7" - 14 270
	80' 10" - 12 020	80' 10" - 12 020
Jib outreach / lifting capacity (ft - lbs)	-	105' 3" - 3 170
	-	115' 1" - 2 490
	-	125' 0" - 1 980
	-	134' 10" - 1 650
	-	144' 8" - 1 410
	-	154' 6" - 1 250
Slewing angle (°)	Continuous	Continuous
Weight, "standard" crane without stabilizers (lbs)	67 830	75 110



Features

- HP-Drive remote control system
- ASC: Automatic Speed Control
- VSL: Variable Stability Limit
- LSS-V: Load Stability System
- SAF: Semi Automatic Folding
- PFD: Pump Flow Distribution
- ProCare
- nDurance™ nano technology coating
- HiConnect



Hiab is a leading provider of smart and sustainable load handling solutions. We are committed to delivering the best customer experience every day with the most engaged people and partners. Hiab's premium equipment includes HIAB, EFFER and ARGOS loader cranes, MOFFETT and PRINCETON truck mounted forklifts, LOGLIFT forestry cranes, JONSERED recycling cranes, MULTILIFT skiploaders and hooklifts, GALFAB roll-off cable hoists, and tail lifts under the ZEPRO, DEL and WALTCO brands. As the industry pioneer, Hiab continues to make load handling smarter, safer and more sustainable to build a better tomorrow.



Hiab USA, Inc.
12233 Williams Rd
Perrysburg, 43551 OH USA
tel. +419 482 6000

effer.com - hiab.com

EFFER is part of Hiab