

# HIAB X-HIPRO 232



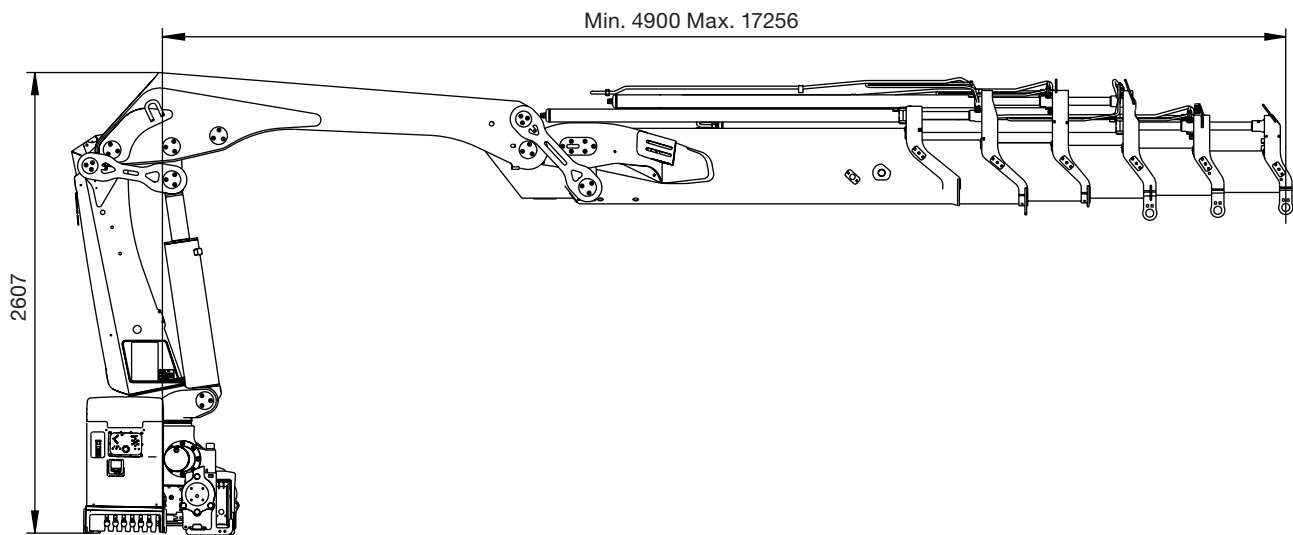
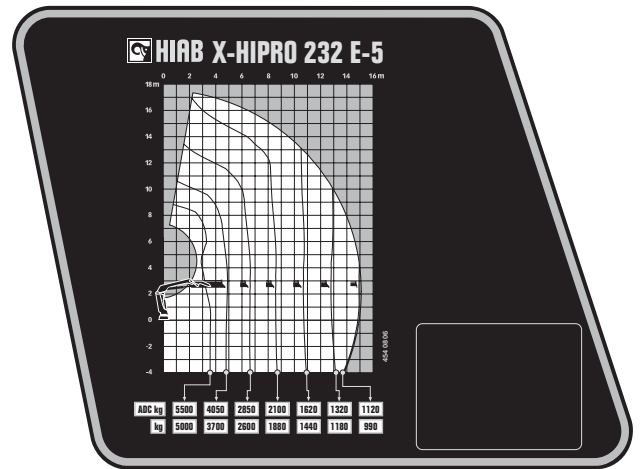
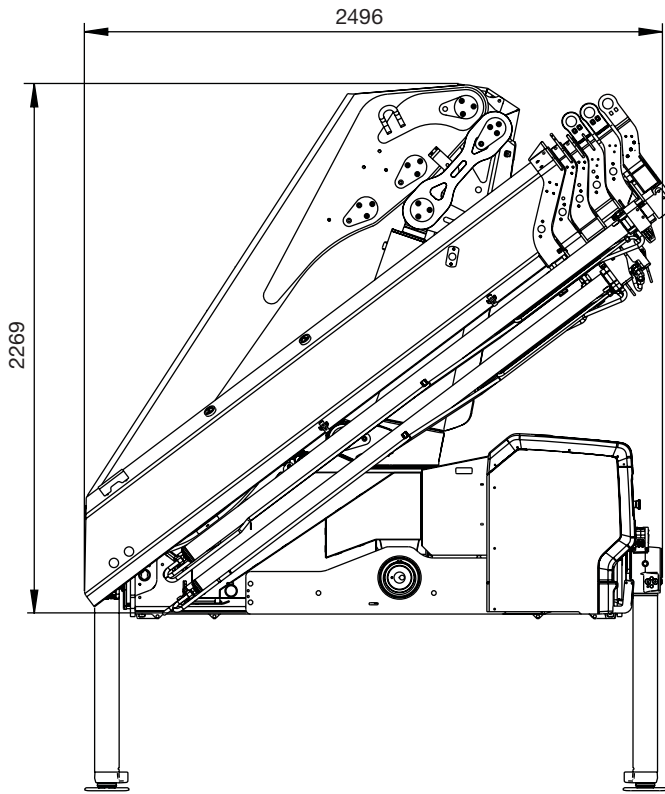
# HIAB X-HIPRO 232 BASIC DATA

Technical data	X-HiPro 232 E-3	X-HiPro 232 E-4	X-HiPro 232 E-5	X-HiPro 232 E-6
Mdyn (kNm)	249		250	
Lifting capacity (kNm)	186	181	177	174
Lifting capacity (tm)	19	18.5	18.1	17.7
Lifting capacity (ADC) (kNm)	203	199	194	191
Lifting capacity (ADC) (tm)	20.7	20.2	19.8	19.4
Outreach / lifting capacity, standard (m-kg)	3.5 - 5 900 4.7 - 4 400 6.5 - 3 100 8.5 - 2 340 10.5 - 1 880	3.5 - 5 800 4.7 - 4 300 6.5 - 3 000 8.5 - 2 220 10.5 - 1 760 12.6 - 1 460	3.6 - 5 500 4.9 - 4 050 6.6 - 2 850 8.6 - 2 100 10.7 - 1 620 12.8 - 1 320 15 - 1 120	3.6 - 5 400 4.9 - 3 950 6.7 - 2 700 8.6 - 2 000 10.6 - 1 520 12.7 - 1 220 14.9 - 1 020 17.2 - 870
Outreach / lifting capacity, manual extension (m/kg)	12.7 - 1 500	14.9 - 1 160	17.4 - 560	19 - 420
Hydraulic outreach, standard (m)	10.6	12.8	15.1	17.3
Hydraulic boom extension (m)	5.9	8.0	10.2	12.4
Outreach, manual extensions (m)	12.8	15	17.5	19.1
Lifting height above installation level, hydr/man. (m)	13.1 / 15.3	15.2 / 17.5	17.6 / 19.9	19.8 / 21.6
Rec. oil flow (l/min)	90 - 120			
Working pressure (Mpa)	34,5			
Oil in tank (l)	92 - 200			
Tank capacity (l)	0 - 235			
Slewing angle (°)	415			
Max. slope viable at full capacity (°)	5			
Slewing torque, gross (kNm)	28.3			
Slewing speed 80(°/s)	16			
Slewing speed (°/s)	16			
Lifting speed at standard hydraulic outreach (m/s)	1.8	2.1	2.5	2.9
Height in folded position (mm)	2,269			
Width in folded position (mm)	2,485		2,496	
Install space required with hose and pipe kit (mm)	1,407		1,413	1,373
Crane in standard version without stabiliser system (kg)	2,185	2,325	2,445	2,575
Frame attachments (kg)	40 - 65			
Stabiliser system (kg)	271 - 428			

*This table shows a few examples of models, and represents some of all options available. With the opportunity to configure your crane, we can provide you with a crane perfectly tailored to your needs.*

*Please contact your local dealer for more information on the variety of options we can offer.*

# Hiab X-HIPRO 232 E-5



# BUILT TO PERFORM

Hiab is the world's leading provider of on-road load handling equipment, intelligent services, smart and connected solutions. Hiab's class-leading load handling equipment includes HIAB, EFFER and ARGOS loader cranes, LOGLIFT and JONSERED forestry and recycling cranes, MOFFETT and PRINCETON truck mounted forklifts, MULTILIFT skiploaders and hooklifts, and tail lifts under the ZEPRO, DEL, and WALTCO brands.

As the industry pioneer and with a proud 75 year history, Hiab is committed to be the preferred partner and solution provider to its customers and shape the future of intelligent load handling.

[hiab.com](https://hiab.com)

Hiab is part of Cargotec Corporation.

[cargotec.com](https://cargotec.com)

**Disclaimer.** We reserve the right to make changes. Illustrations, drawings and data are not always in accordance with the latest version or standard model in production. The models in the pictures may present special equipment or colours.