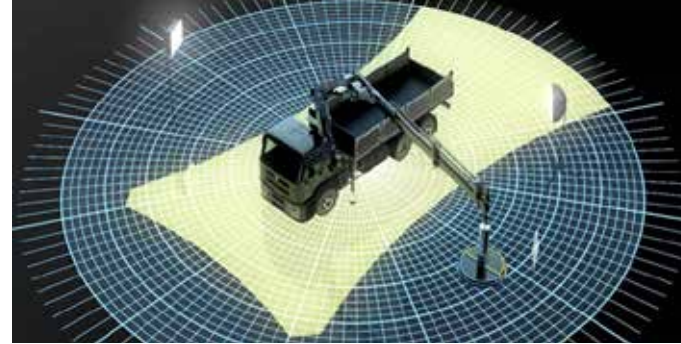


# EFFER ADDRESSES YOUR INDUSTRY PAIN POINTS

## EFFER ADDRESSES YOUR INDUSTRY PAIN POINTS

EFFER loader cranes are stronger, tougher, and smarter, easily adapting to the ever changing needs of the material handling industry. With reliable support, intelligent services, and a growing number of connected solutions, EFFER loader cranes will maximize performance by offering the right solution for loading, unloading, or moving materials. Like no other truck mounted equipment provider, EFFER understands the specific requirements and realities of any industry and will help secure a safer, more efficient operation with reduced downtime while maximizing revenue.

- SAFETY**  
 EFFER's industry leading technology provides world class safety features that keep operators safe and in control, minimizing risk to individuals or the environment. With the smart technology solutions of EFFER's loader cranes, human driven errors and unsafe operations are reduced.
- EFFICIENCY**  
 EFFER's advanced technology drives the performance of the equipment resulting in superior operation efficiencies. EFFER's class-leading products can not only be used by operators of different skill levels, but are also helpful with everchanging resources, supporting business efficiency and increasing productivity.
- DOWNTIME**  
 EFFER's renowned reliability combined with industry leading safety features and control systems is proven to reduce downtime, while our nationwide service network ensures that equipment is maintained with minimal oversight.
- TRAINING**  
 Training and educating operators takes time, but EFFER's advanced control systems and technology allows customers to manage their resources in the best way, whether the operator is highly experienced or a new employee without losing too much time.
- RELIABILITY**  
 EFFER loader cranes are the industry leaders in the area of reliability. Our premium engineering and cutting edge operation management features ensure optimum longevity and service life of your equipment. All backed up with the most comprehensive warranty in the market.
- REVENUE**  
 EFFER loader cranes provide many cost benefits that are ideal for businesses with repetitive, efficient operations. With a reliable design, quality materials, game changing smart technology, and industry specific innovation, investing in EFFER equipment provides a total package for any industry.



## FEATURES THAT OPTIMIZE OPERATIONS

- EFFER's VARIABLE STABILITY LIMIT SYSTEM (VSL+)** monitors the truck's stability by registering the extension of the stabilizers and monitoring the pressures at each leg to determine the maximum safe capacity of the crane, allowing to use the load for increased lifting performance.
- EFFER Heavy range cranes** are managed by the HP-Drive control system, which assures smooth, fast and precise crane movements, the Overload Protection (OLP) delivers an unprecedented level of safety to operations without reducing performance. When approaching an overload condition, the crane gives an audible and visual signal at 90% and will stop all radius increasing functions once full capacity has been reached.
- AUTOMATIC SPEED CONTROL (ASC)** reduces dynamic loading by progressively reducing the speed of the crane when the capacity is between 80% and 100%, preventing operators from performing unsafe, abrupt movements.
- PUMP FLOW DISTRIBUTION (PFD)** provides smooth and precise crane operations by equally dividing oil flow among the functions.
- These range cranes are equipped with the **COMBIDRIVE 3** remote control, increasing efficiency by giving the operator freedom of movement to use the best possible position to view the load. With the speed switch, the operator can shift to the best speed in different loading situations for better control and reduce risks.
- LOAD STABILITY SYSTEM (LSS-V)** provides smoother, more precise vertical boom motions. If an operator performs a hard stop while raising or lowering a load, the LSS-V system controls the boom movement, minimizing the bouncing of the boom and load, while preventing load damage and unnecessary stress on the crane's components for a longer working life and durability.
- SEMI AUTOMATIC FOLDING (SAF)** simplifies the stowing process reducing it to a single-lever operation, protecting the crane and the truck from damage. It allows a single lever operation to fold and unfold the crane, while activating just one lever, which greatly simplifies this frequent routine operating task.
- nDurance™** finish is an anti-corrosion paint system using nano technology for maintaining a rust-free reliable crane.

Our extensive stock of parts at our **REGIONAL DISTRIBUTION CENTER** ensures next-day delivery on almost all items, reducing downtime and saving you money. The same team you trust to deliver high-quality, premium products to your exact requirements can also be trusted to keep you moving.



EFFER's **COMPREHENSIVE WARRANTY** exceeds the industry's standard terms because our products are designed to last longer and provide many years of reliable service.

EFFER's innovative design elements have the working **ENVIRONMENT** in mind. EFFER cranes have a high performing control system, which saves on fuel consumption. Our Valve 200, when combined with a variable displacement piston pump, provides the highest level of speed, precision, and efficiency available. On average, a EFFER crane with the V200 and variable pump will consume 325 gallons less diesel fuel per year compared to other models using fixed displacement pumps.

Hiab is a leading provider of smart and sustainable load handling solutions. We are committed to delivering the best customer experience every day with the most engaged people and partners. Hiab's premium equipment includes HIAB, EFFER and ARGOS loader cranes, MOFFETT and PRINCETON truck mounted forklifts, LOGLIFT forestry cranes, JONSERED recycling cranes, MULTILIFT skiploaders and hooklifts, GALFAB roll-off cable hoists, and tail lifts under the ZEPRO, DEL and WALTCO brands. As the industry pioneer, Hiab continues to make load handling smarter, safer and more sustainable to build a better tomorrow.

[effer.com](http://effer.com) - [hiab.com](http://hiab.com)

EFFER is part of Hiab



Hiab Inc Usa  
 12233 Williams Road  
 Perrysburg, OH 43551 USA  
 tel. +419 482 6000

PB-EFFER-HEAVY\_RANGE-2021223-rev.002-US

**PRODUCT RANGE**  
**HEAVY RANGE CRANES**

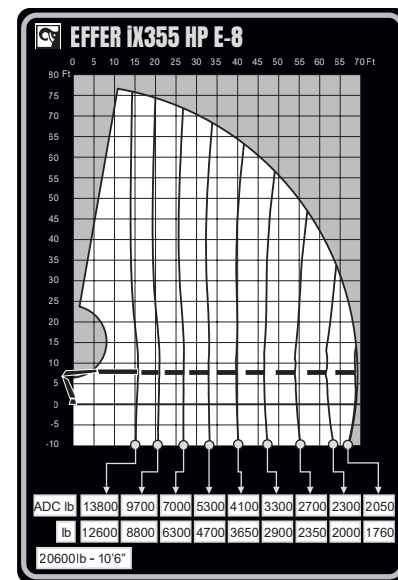


## HiConnect™

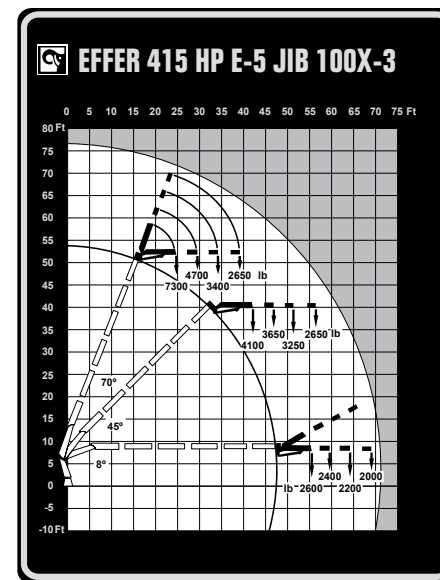
HiConnect™ is a web-based dashboard that displays insights on equipment usage, location, time in operation, idle time, and productivity level. By enabling new insights, it helps you to further increase efficiency, productivity, and safety. HiConnect is the latest technology in terms of connectivity capabilities. Being able to remotely access data is key to maximizing your business with facts instead of assumptions. HiConnect maintains constant contact with all units, giving fleet managers the ability to stop unsafe behavior and usage before an incident happens. With the ability to view service history and plan upcoming services, your fleet has minimum downtime and increases daily efficiencies.



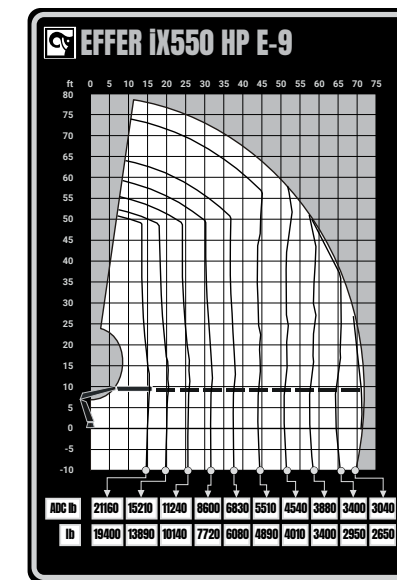
## iX.355 HP



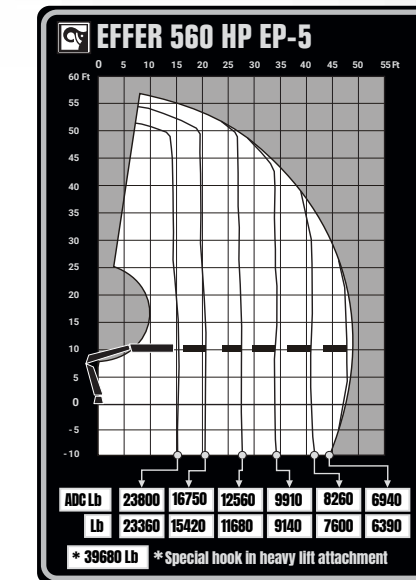
## 415 HP



## iX.550 HP



## 565 HP



The EFFER heavy range of cranes are the market's leading heavy segment loader cranes. With our industry leading, cutting edge HiPro technology, such as Semi Automatic Folding (SAF), Load Stability System (LSS-V), Variable Stability Logic (VSL), CombiDrive remote control, V200 Hydraulics and Space X4 control systems, crane performance is optimized and operation is simplified, resulting in a faster, safer, more efficient and durable crane. Our innovative functions support and protect your everyday work, saving time and giving you an edge over competition. The continuous slewing system adds flexibility and speed to this crane's operations with models available with up to ten extensions and optional JIBs for additional reach. The special nDurance paint protection finish further contributes to making the crane look and last longer. EFFER cranes provide you with premium quality and full control over the toughest jobs to be done.

TECHNICAL DATA	iX.355 HP E-5 JIB 100X-2	iX.355 HP E-8
Lifting capacity (ft-lbs)	209 180	197 750
Maximum outreach - Lifting capacity (lbs)	64' 4" - 1 830	68' 11" - 2030
Weight, including stabilizers (lbs)	11 480	10 580
Control system	HP-Drive remote	HP-Drive remote

TECHNICAL DATA	415 HP E-5 JIB 100X-3	415 HP E-8	iX.550 HP E-6	iX.550 HP E-6 JIB 150X-6	iX.550 HP E-9
Lifting capacity (ft-lbs)	264 785	253 721	340 720	340 720	327 480
Maximum outreach - Lifting capacity (lbs)	69' 3" - 1 830	68' 7" - 2 510	50' 2" - 5 910	85' 0" - 1 480	71' 2" - 3 040
Weight, including stabilizers (lbs)	10 930	9 915	13 140	16 190	14 460
Control system	HP-Drive remote	HP-Drive remote	HP-Drive remote	HP-Drive remote	HP-Drive remote

TECHNICAL DATA	565 HP EP-3	565 HP EP-4	565 HP EP-5
Lifting capacity (ft-lbs)	367 900	362 000	359 190
Maximum outreach - Lifting capacity (lbs)	33' 9" - 10 692	39' 8" - 708	47' 7" - 6 945
Weight, including stabilizers (lbs)	10 850	11 265	11 735
Control system	HP-Drive remote	HP-Drive remote	HP-Drive remote