

JONSERED 2490S

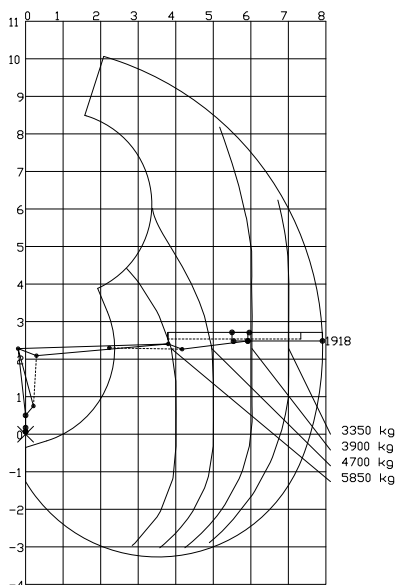


JONSERED 2490S BASIC DATA

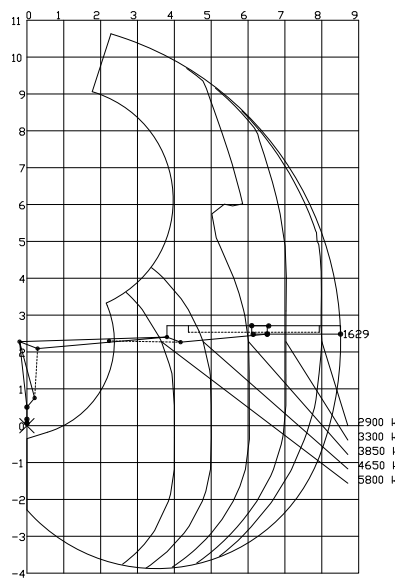
Technical data	J2490S 79	J2490S 85	J2490S 85	J2490S 91	J2490S 91	J2490S 95
1 st boom	4.0	4.0	4.6	4.6	5.2	4.0
Max. lifting capacity (kNm)	234	232	231	228	225	225
Hydraulic outreach* (m)	7.90	8.50	8.50	9.10	9.10	9.50
Hydraulic boom extension* (m)	1.65	1.65	1.65	1.65	1.65	2.90
Outreach - lifting capacity, standard (m - kg)	4.0 - 5700 5.0 - 4650 6.0 - 3900 7.5 - 3150	4.0 - 5400 5.0 - 4500 6.0 - 3850 7.0 - 3300 8.0 - 2900	4.0 - 5600 5.0 - 4550 6.0 - 3850 7.0 - 3300 8.0 - 2850	4.0 - 5400 5.0 - 4400 6.0 - 3750 7.0 - 3250 8.0 - 2850 9.0 - 2440	4.0 - 5600 5.0 - 4500 6.0 - 3750 7.0 - 3200 8.0 - 2800 9.0 - 2400	4.0 - 5300 5.0 - 4400 6.0 - 3750 7.0 - 3150 8.0 - 2750 9.0 - 2440
Slewing system	Double	Double	Double	Double	Double	Double
Slewing angle (°)	415	415	415	415	415	415
Slewing torque, gross (kNm)	44	44	44	44	44	44
Max. slope viable at full capacity (°)	8	8	8	8	8	8
Max. working pressure (MPa)	26.5	26.5	26.5	26.5	26.5	26.5
Recommended oil flow – fixed pump (l/min), 1-pump	-	-	-	-	-	-
Recommended oil flow – fixed pump (l/min), 2-pump	2 x 90	2 x 90	2 x 90	2 x 90	2 x 90	2 x 90
Min. recommended oil flow – variable displacement pump (l/min)	-	-	-	-	-	-
Power needed at rec. oil flow (kW) - fixed pump, 1-pump	-	-	-	-	-	-
Power needed at rec. oil flow (kW) - fixed pump, 2-pump	88	88	88	88	88	88
Power needed at rec. oil flow (kW) - variable displacement pump	-	-	-	-	-	-
Road width (mm)	2485	2485	2485	2485	2485	2485
Weight - Top seat crane with ET450 stabilizer equipment (kg) ¹⁾	2920	2960	2970	3010	3030	3150
Weight - Top seat crane with SY550 stabilizer equipment (kg) ¹⁾	3050	3090	3100	3140	3150	3270

¹⁾ Weight with fixed pump system, oil weight included

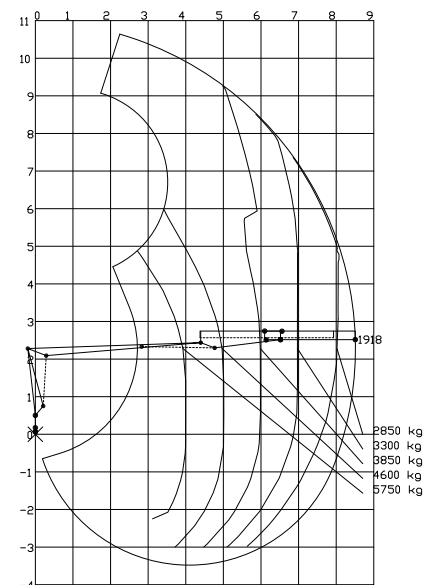
Load diagram J2490S79 (40)



Load diagram J2490S85 (40)

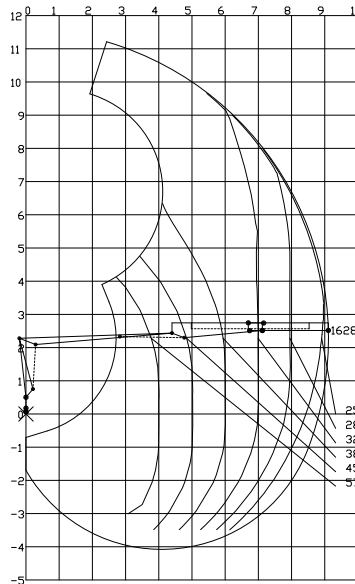


Load diagram J2490S85 (46)

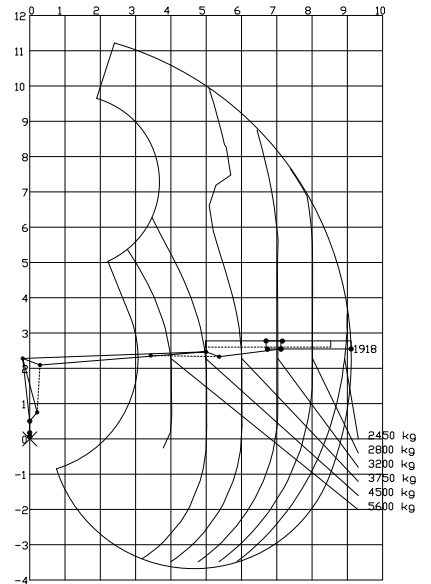


J2490S 97	J2490S 107	J2490S 126
5.2	5.2	6.7
222	213	202
9.70	10.70	12.60
1.65	2.90	1.65
4.0 - 5400	4.0 - 5300	4.0 - 4800
5.0 - 4350	5.0 - 4250	5.0 - 3950
6.0 - 3700	6.0 - 3550	6.0 - 3300
7.0 - 3150	7.0 - 3000	7.0 - 2850
8.0 - 2750	8.0 - 2600	8.0 - 2500
9.0 - 2440	9.0 - 2300	9.0 - 2240
	10.0 - 2060	10.0 - 2000
		11.0 - 1800
		12.0 - 1620
Double	Double	Double
415	415	415
44	44	44
8	8	8
26.5	26.5	26.5
-	-	-
2 x 90	2 x 90	2 x 90
-	-	-
-	-	-
88	88	88
-	-	-
2485	2485	2485
3070	3250	3270
3190	3380	3400

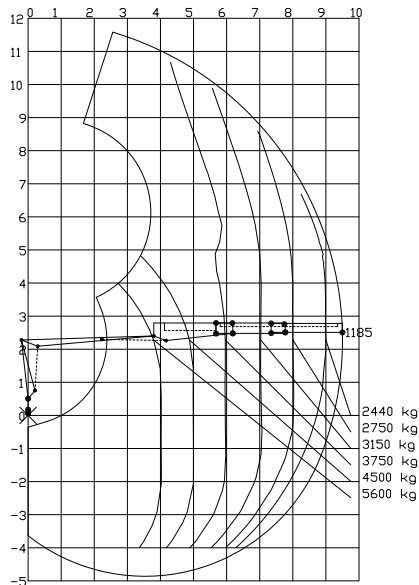
Load diagram J2490S91 (46)



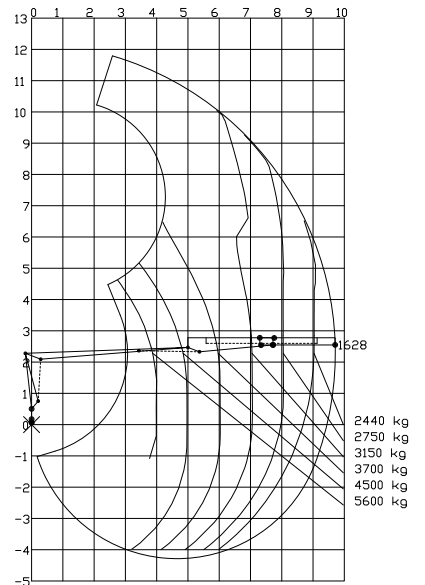
Load diagram J2490S91 (52)



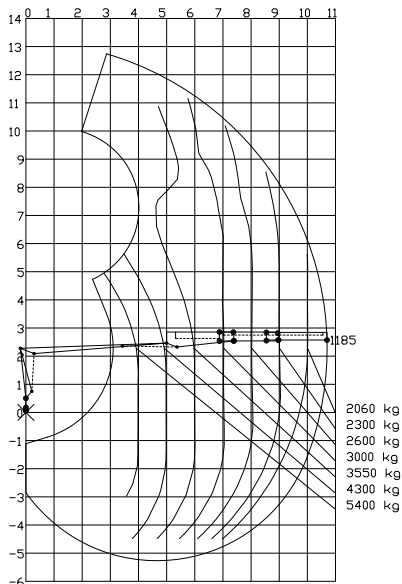
Load diagram J2490S95 (40)



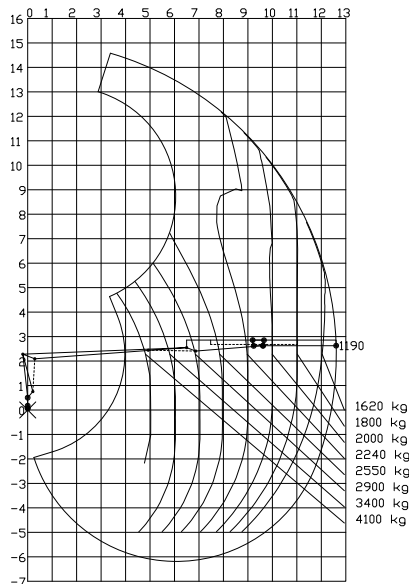
Load diagram J2490S97 (52)



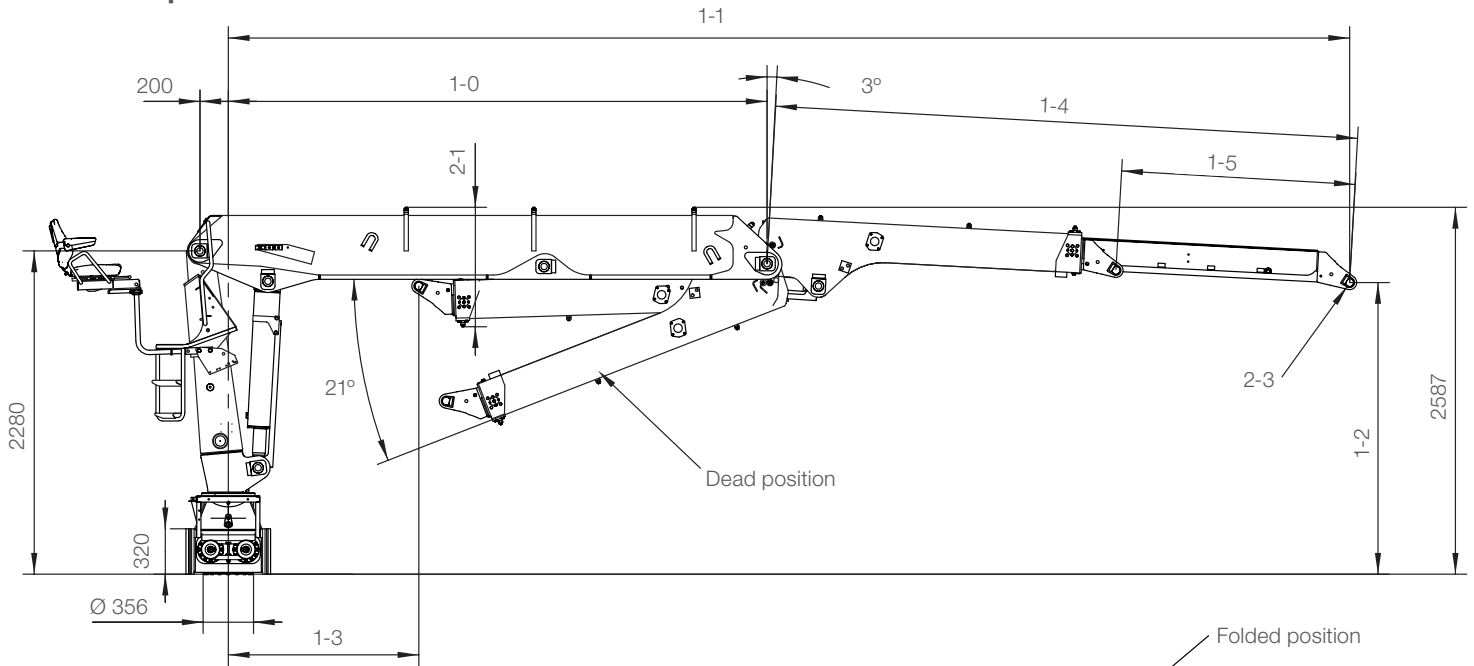
Load diagram J2490S107 (52)



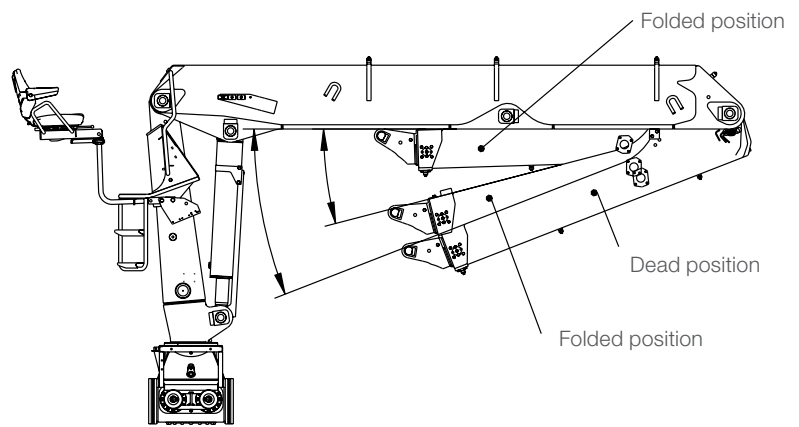
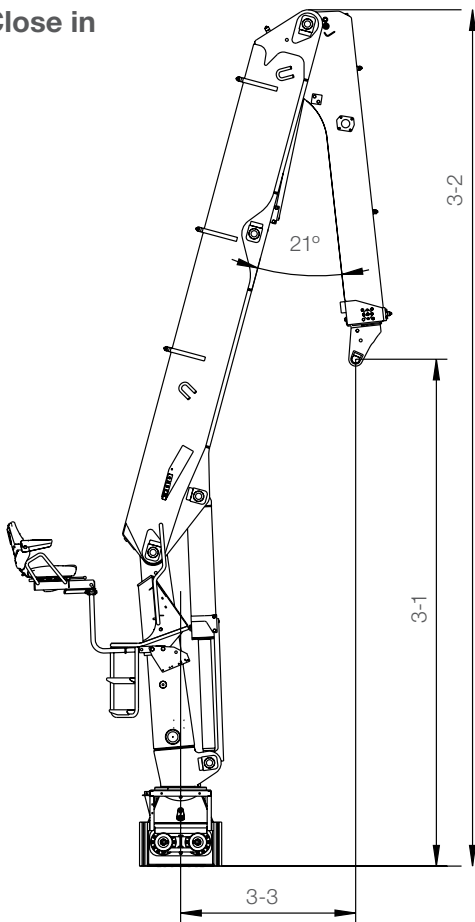
Load diagram J2490S126 (67)



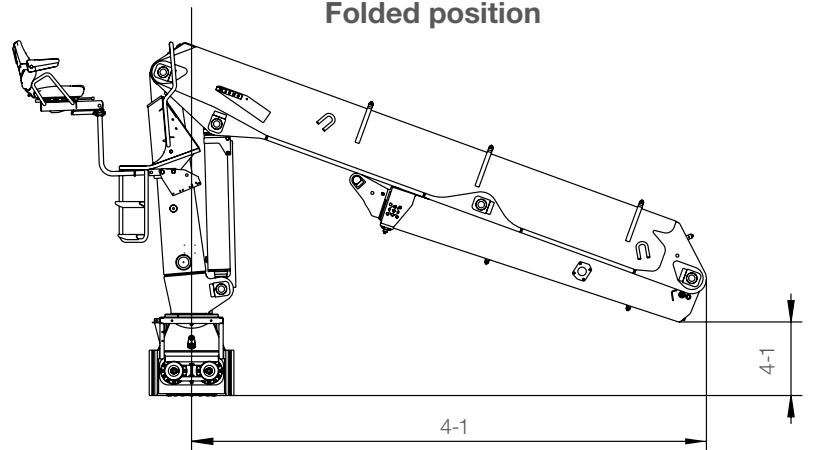
J2490S Top seat



Close in

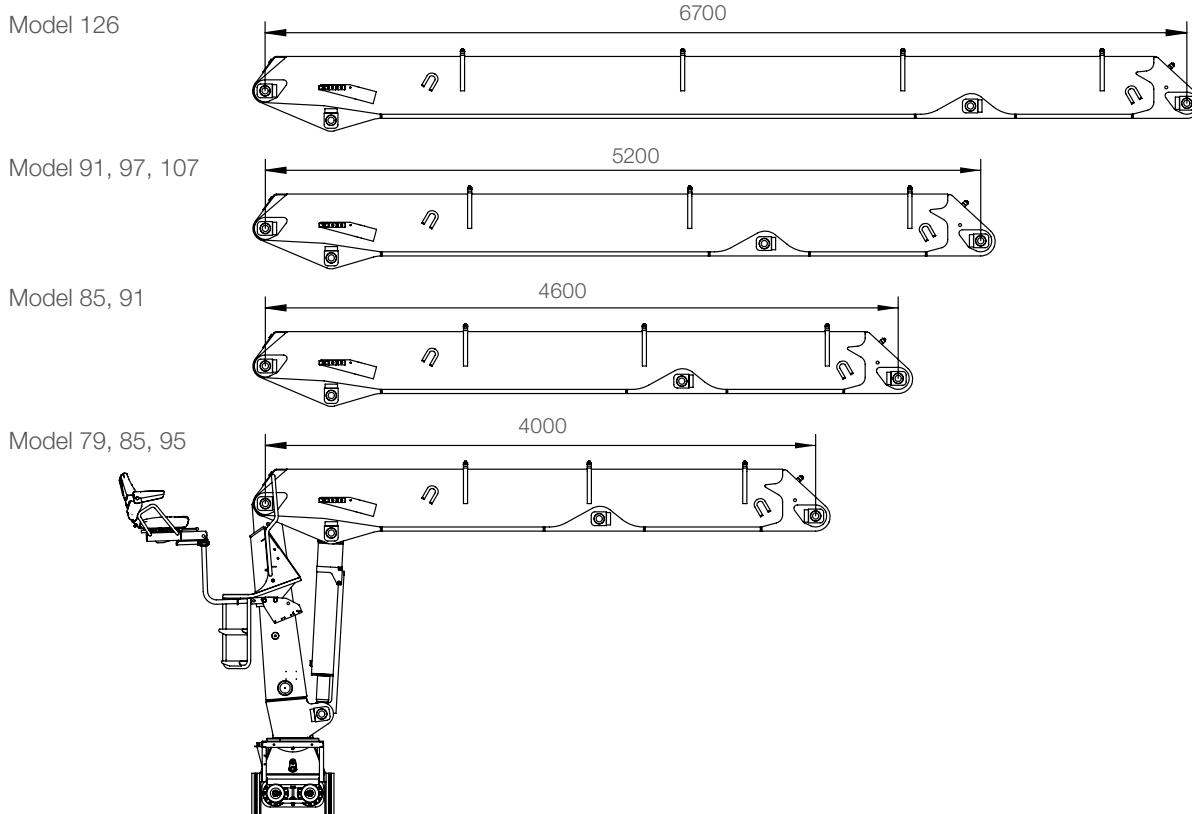


Folded position

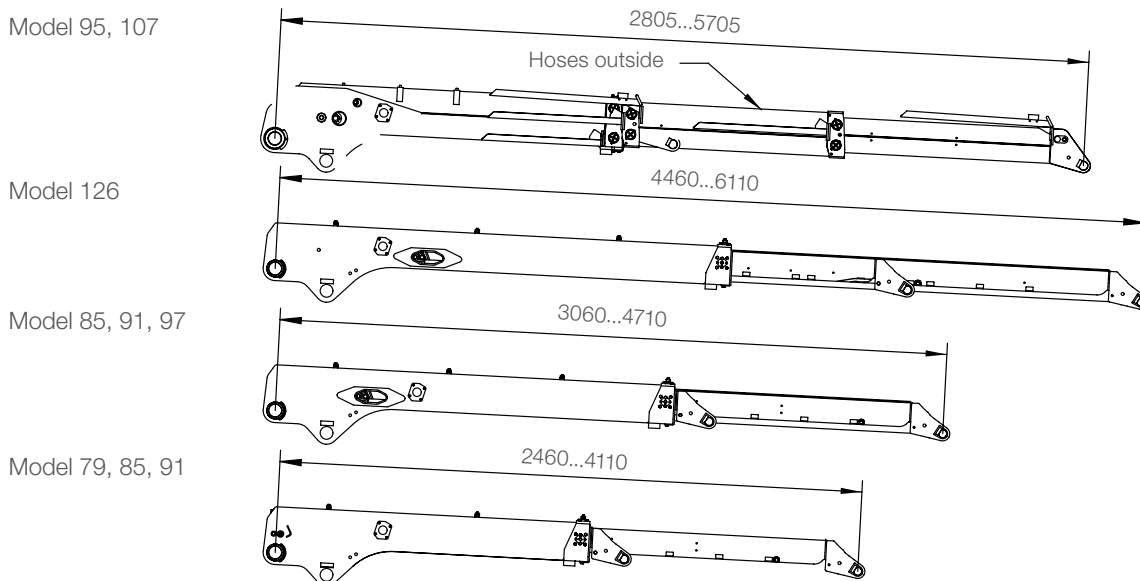


Model	1-0	1-1 min	1-1 max	1-2	1-3	1-4	1-5	2-1	2-2	2-3	HPL
79	4000	6261	7909	2057	1344	4110	1650	842	1745	Ø 40, B=184	X
85 (4.0)	4000	6860	8508	2026	744	4710	1650	860	1728	Ø 40, B=184	X
85 (4.6)	4600	6861	8509	2057	1944	4110	1650	842	1745	Ø 40, B=184	X
91 (4.6)	4600	6860	9104	2026	1344	4710	1650	860	1728	Ø 40, B=184	X
91 (5.2)	5200	7461	9109	2057	2544	4110	1650	842	1745	Ø 40, B=184	X
95	4000	6608	9504	1998	998	5705	2900	916	1672	Ø 45, B=80	
97	5200	8060	9708	2026	1944	4710	1650	860	1728	Ø 40, B=184	X
107	5200	7808	10904	2000	2198	5705	2900	916	1672	Ø 45, B=80	
126	6700	10958	12806	1952	2045	6110	1650	872	1716	Ø 40, B=184	X

First booms



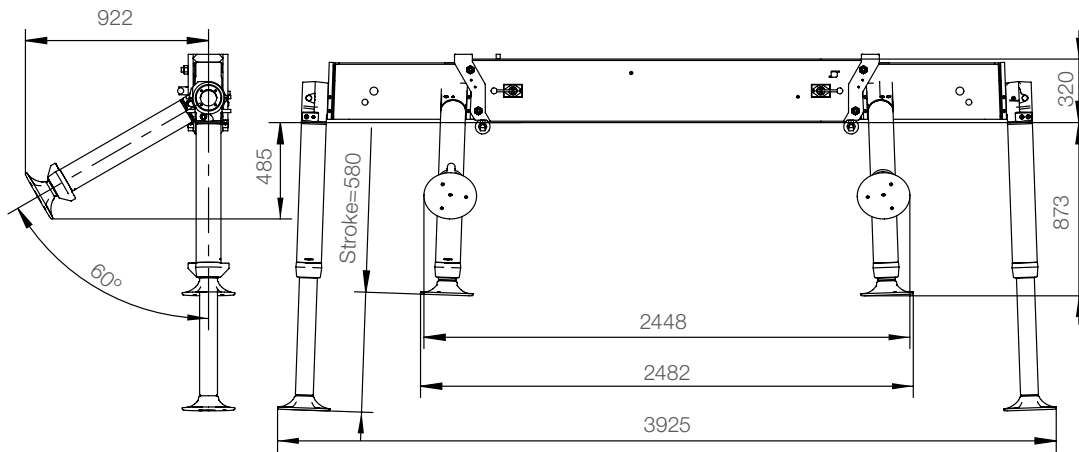
Second boom systems



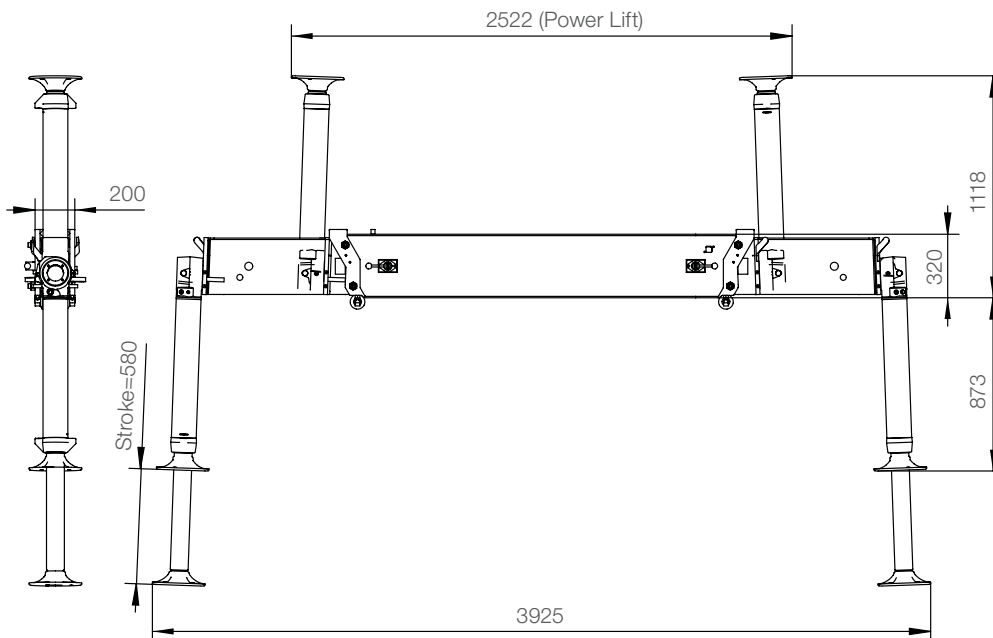
Model	3-1	3-2	3-3	HPL
79	3684	6224	1272	X
85 (4.0)	3088	6224	1338	X
85 (4.6)	4264	6804	1428	X
91 (4.6)	3667	6804	1494	X
91 (5.2)	4843	7383	1583	X
95	3344	6224	1334	
97	4247	7383	1649	X
107	4503	7383	1645	
126	4304	8332	2190	X

Model	4-1	4-2	HPL
79	3631	519	X
85 (4.0)	3631	519	X
85 (4.6)	4195	314	X
91 (4.6)	4195	314	X
91 (5.2)	4795	108	X
95	3631	499	
97	4759	109	X
107	4759	89	
126	6169	-404	X

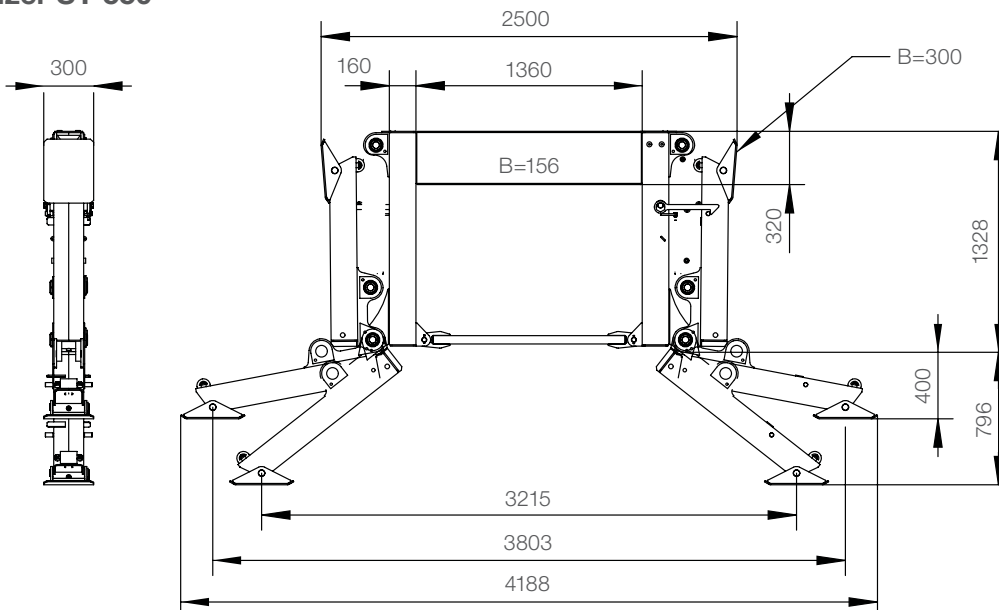
Stabilizers ET450

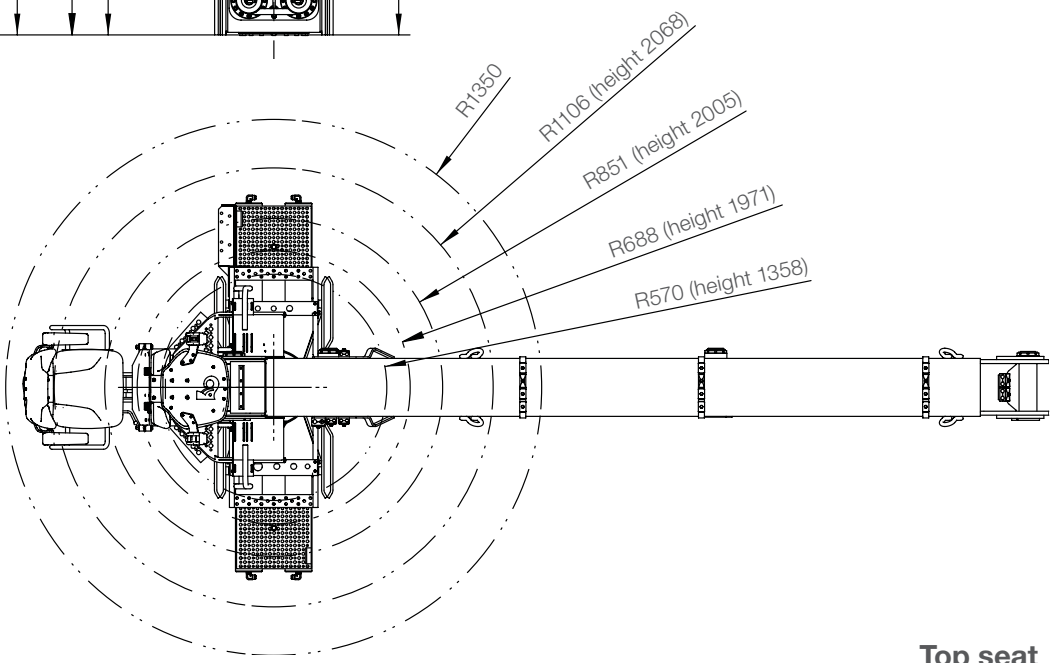
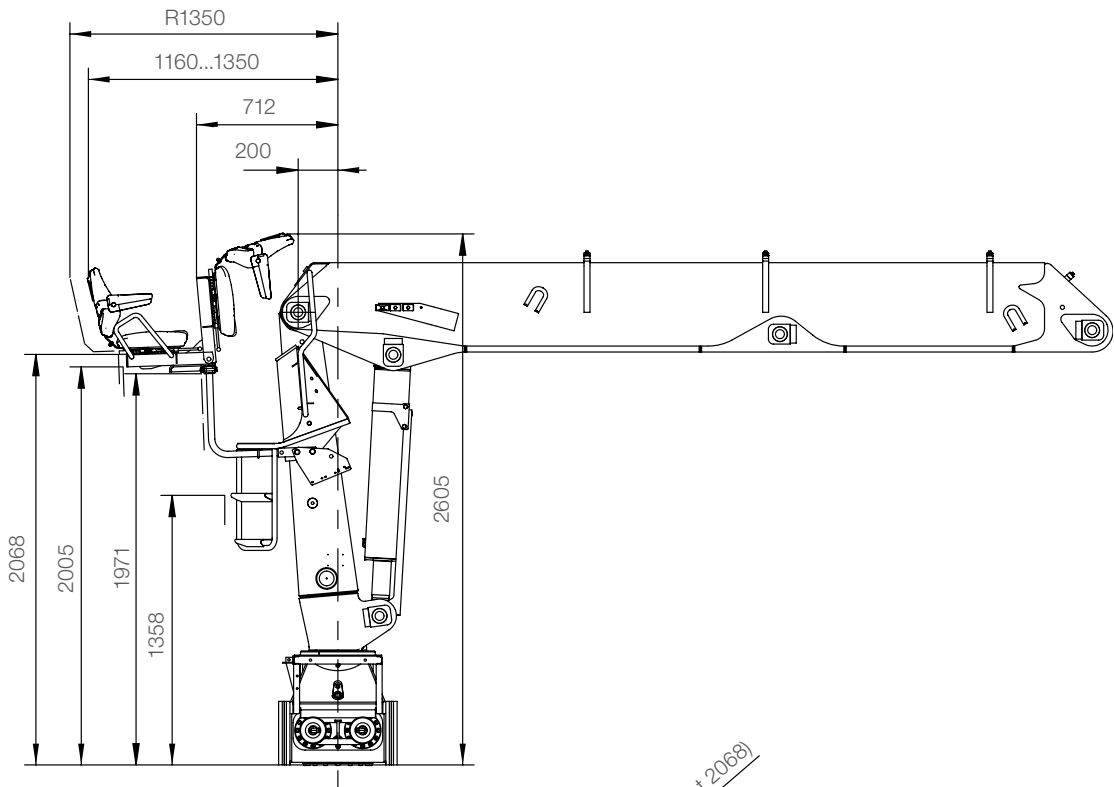


Stabilizers ET450 Power Lift

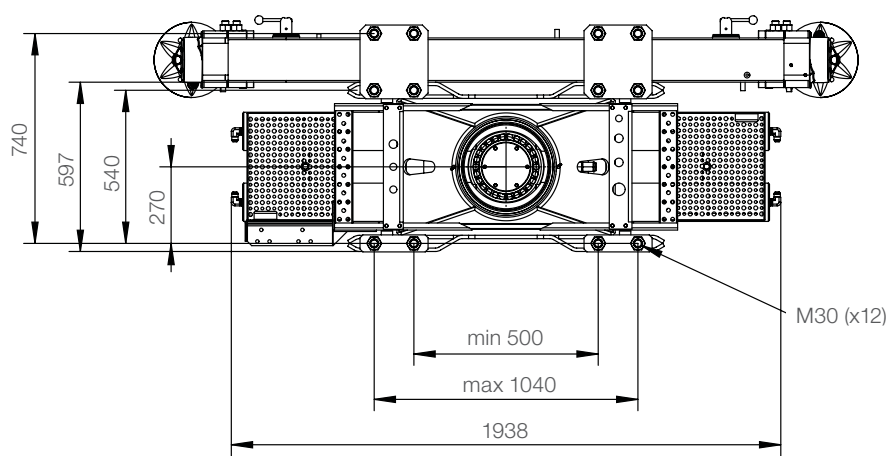


Stabilizer SY 550

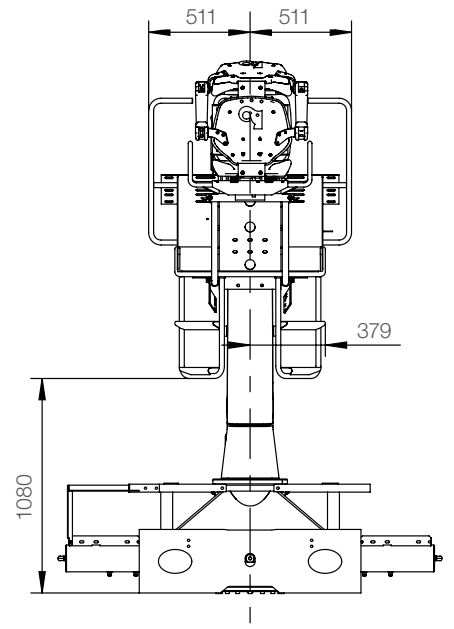




Base with stabilizers



Top seat



BUILT TO PERFORM

Hiab is the world's leading provider of on-road load handling equipment. Customer satisfaction is the first priority for us. Hiab's product range includes HIAB loader cranes, JONSERED recycling and forestry cranes, LOGLIFT forestry cranes, MOFFETT truck mounted forklifts and MULTILIFT demountables, as well as DEL, WALTCO and ZEPRO tail lifts.

hiab.com

Hiab is part of Cargotec.

cargotec.com

Disclaimer. We reserve the right to make changes. Illustrations, drawings and data are not always in accordance with the latest version or standard model in production. The models in the pictures may present special equipment or colours.

© TD-J2490S-EN-WW_161018

