



# EFFER 415 HP

TECHNICAL SPECIFICATION

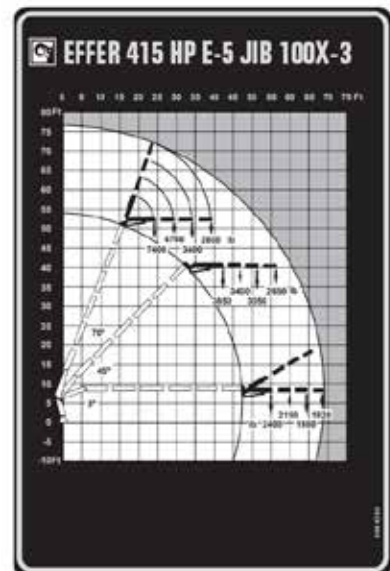
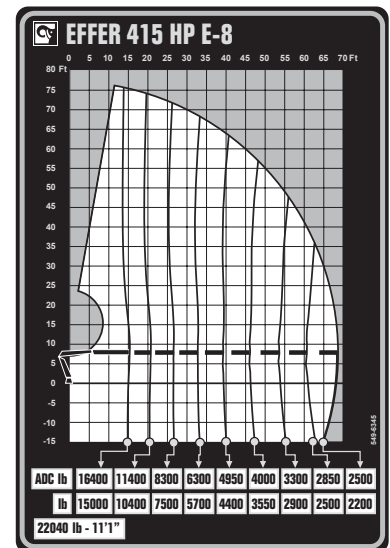
# EFFER 415 HP

TECHNICAL DATA	415 HP E-5 + JIB 100X-3	415 HP E-8
Max. lifting capacity (ft-lbs)	264 785	253 721
Outreach, hydraulic extensions (ft)	-	68' 8"
Outreach, with jib (ft)	69' 5"	-
Outreach / lifting capacity (ft-lbs)	14' 5" - 18 298 19' 8" - 13 007 25' 11" - 9 480 31' 10" - 7 496 38' 5" - 6 173 45' 3" - 5 159 JIB 55' 5" - 2381 JIB 59' 7" - 2 139 JIB 64' 4" - 1 984 JIB 69' 3" - 1 830	10' 6" - 22 050 15' 5" - 16 310 20' 8" - 11 460 26' 7" - 8 270 32' 10" - 6 280 39' 4" - 4 940 46' 3" - 3 970 53' 6" - 3 310 61' 0" - 2 820 68' 7" - 2 510
Slewing angle (°)	Continuous	Continuous
Height in folded position (in)	107	97
Width in folded position (in)	98	100
Installation space needed (in)	58	55
Weight, "standard" crane without stabilizers (lbs)	10 926	9 915
Weight, stabilizer equipment (lbs)	1 010 - 1 925	1 010 - 1 925

## Features

- HP-Drive remote control system
- VSL: Variable Stability Limit (Optional)
- LSS-V: Load Stability System (Optional)
- SAF: Semi Automatic Folding
- HiConnect
- nDurance™ nano technology coating

- 1 Year warranty - All inclusive
- 3 Year warranty - Structura



Hiab is a leading provider of smart and sustainable load handling solutions. We are committed to delivering the best customer experience every day with the most engaged people and partners. Hiab's premium equipment includes HIAB, EFFER and ARGOS loader cranes, MOFFETT and PRINCETON truck mounted forklifts, LOGLIFT forestry cranes, JONSERED recycling cranes, MULTILIFT skiploaders and hooklifts, GALFAB roll-off cable hoists, and tail lifts under the ZEPRO, DEL and WALTCO brands. As the industry pioneer, Hiab continues to make load handling smarter, safer and more sustainable to build a better tomorrow.



**Hiab USA, Inc.**  
12233 Williams Rd  
Perrysburg, 43551 OH USA  
tel. +419 482 6000

[effer.com](http://effer.com) - [hiab.com](http://hiab.com)

EFFER is part of Hiab