

READY TO DELIVER ALL-AROUND PERFORMANCE

EFFER ADDRESSES YOUR INDUSTRY PAIN POINTS

EFFER loader cranes are stronger, tougher, and smarter, easily adapting to the ever changing needs of the material handling industry. With reliable support, intelligent services, and a growing number of connected solutions, EFFER loader cranes will maximize performance by offering the right solution for loading, unloading, or moving materials. Like no other truck mounted equipment provider, EFFER understands the specific requirements and realities of any industry and will help secure a safer, more efficient operation with reduced downtime while maximizing revenue.

- SAFETY**
 EFFER's industry leading technology provides world class safety features that keep operators safe and in control, minimizing risk to individuals or the environment. With the smart technology solutions of EFFER's loader cranes, human driven errors and unsafe operations are reduced.
- EFFICIENCY**
 EFFER's advanced technology drives the performance of the equipment resulting in superior operation efficiencies. EFFER's class-leading products can not only be used by operators of different skill levels, but are also helpful with everchanging resources, supporting business efficiency and increasing productivity.
- DOWNTIME**
 EFFER's renowned reliability combined with industry leading safety features and control systems is proven to reduce downtime, while our nationwide service network ensures that equipment is maintained with minimal oversight.
- TRAINING**
 Training and educating operators takes time, but EFFER's advanced control systems and technology allows customers to manage their resources in the best way, whether the operator is highly experienced or a new employee without losing too much time.
- RELIABILITY**
 EFFER loader cranes are the industry leaders in the area of reliability. Our premium engineering and cutting edge operation management features ensure optimum longevity and service life of your equipment. All backed up with the most comprehensive warranty in the market.
- REVENUE**
 EFFER loader cranes provide many cost benefits that are ideal for businesses with repetitive, efficient operations. With a reliable design, quality materials, game changing smart technology, and industry specific innovation, investing in EFFER equipment provides a total package for any industry.



FEATURES THAT OPTIMIZE OPERATIONS

- nDurance™** finish is an anti-corrosion paint system using nano technology for maintaining a rust-free reliable crane.
- EFFER D-Drive and HP-Drive** controlled system cranes are combined to the XSDrive or CombiDrive 3 remote systems, bringing an unprecedented level of safety to operations without reducing performance. This highly flexible system will make your business safer and more profitable with all electronic functions, managed by our SPACE system, which includes Overload Protection (OLP) and Automatic Duty Control (ADC). When approaching an overload condition, the crane gives an audible and visual signal and will stop all radius increasing functions once full capacity has been reached.
- The XSDRIVE REMOTE CONTROL** increases efficiency by giving the operator freedom of movement to use the best possible position to view the load. It features two way communication with the crane, proportionally controlling movements.

Our extensive stock of parts at our **REGIONAL DISTRIBUTION CENTER** ensures next-day delivery on almost all items, reducing downtime and saving you money. The same team you trust to deliver high-quality, premium products to your exact requirements can also be trusted to keep you moving.



EFFER's **COMPREHENSIVE WARRANTY** exceeds the industry's standard terms because our products are designed to last longer and provide many years of reliable service.

EFFER's innovative design elements have the working **ENVIRONMENT** in mind. EFFER cranes have a high performing control system, which saves on fuel consumption. Our Valve 200, when combined with a variable displacement piston pump, provides the highest level of speed, precision, and efficiency available. On average, a EFFER crane with the V200 and variable pump will consume 325 gallons less diesel fuel per year compared to other models using fixed displacement pumps.

Hiab is a leading provider of smart and sustainable load handling solutions. We are committed to delivering the best customer experience every day with the most engaged people and partners. Hiab's premium equipment includes HIAB, EFFER and ARGOS loader cranes, MOFFETT and PRINCETON truck mounted forklifts, LOGLIFT forestry cranes, JONSERED recycling cranes, MULTILIFT skiploaders and hooklifts, GALFAB roll-off cable hoists, and tail lifts under the ZEPRO, DEL and WALTCO brands. As the industry pioneer, Hiab continues to make load handling smarter, safer and more sustainable to build a better tomorrow.

effer.com - hiab.com

EFFER is part of Hiab



Hiab Inc Usa
 12233 Williams Road
 Perrysburg, OH 43551 USA
 tel. +419 482 6000

PB-EFFER-MEDIUM_RANGE-221223-REV-003-US



PRODUCT RANGE MEDIUM RANGE CRANES



140 D



160 D



230 D



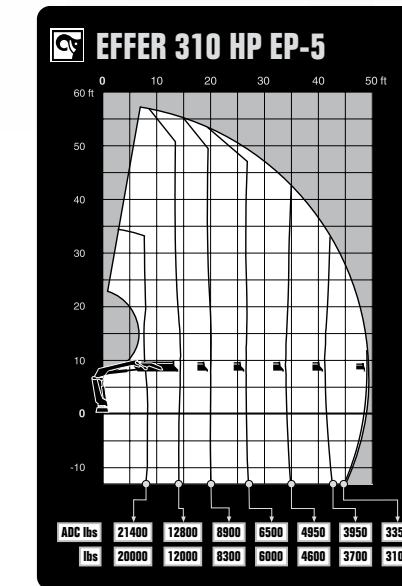
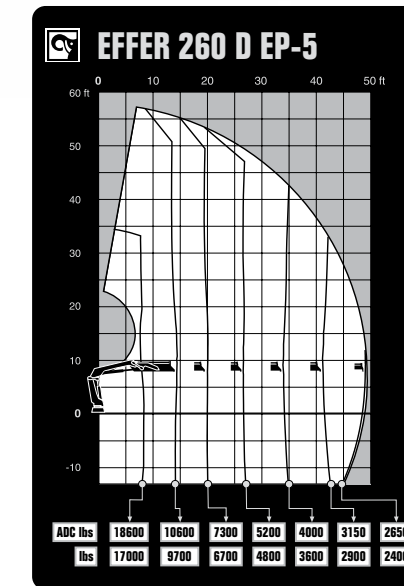
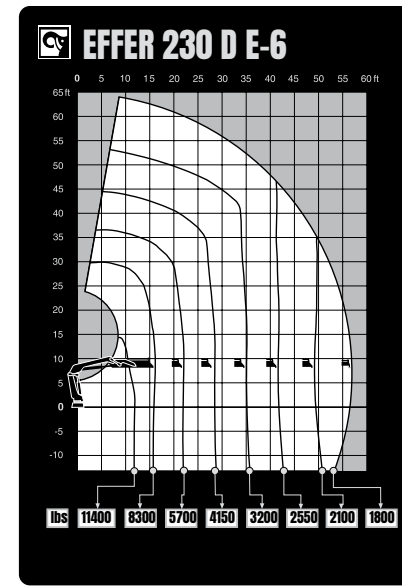
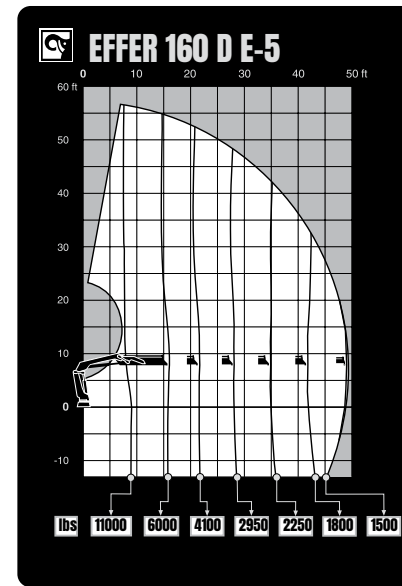
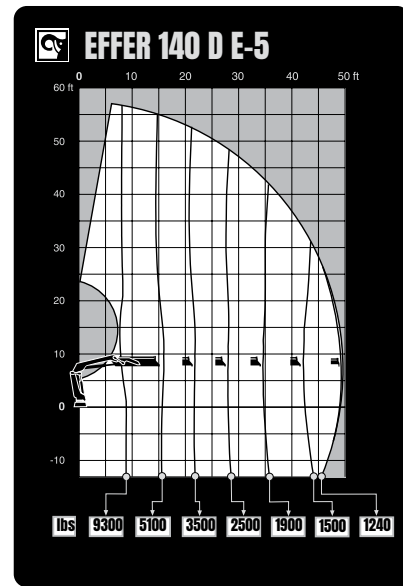
260 D



310 HP



The EFFER medium range cranes provide optimal performance. The automatic control system is the best price-performance remote controlled system you can choose, assuring high levels of safety matched to many functions that make any job easy. Take advantage of the many options and functions that support and protect your everyday work and business. Ideal for a wide range of lifting purposes and for many applications. The special nDurance paint protection finish further contributes to making the crane look and last longer.



TECHNICAL DATA	130 M B-3	140 D B-3	145 HP E-3
Lifting capacity (ft-lbs)	81.131	86.294	89.982
Maximum Outreach	33'10"	33'10"	34'1"
Lifting capacity at max lbs	2.204	2.314	2.425
Control system	M-Drive manual control system	D-Drive remote control system	HP-Drive remote control system
Crane Weight w/ Stabs	4.266	4.288	4.883

TECHNICAL DATA	160 D B-3	190 D E-4	iX.195 HP E-3	230 D B-3	235 HP E-3
Lifting capacity (ft-lbs)	100.935	116.608	126.639	143.603	150.020
Maximum Outreach	33'10"	41'8"	34'9"	34'5"	34'5"
Lifting capacity at max lbs	2.866	2.425	3.395	3.924	4.144
Control system	D-Drive remote control system	D-Drive remote control system	HP-Drive remote control system	D-Drive remote control system	HP-Drive remote control system
Crane Weight w/ Stabs	4.596	5.915	5.563	5.497	5.761

TECHNICAL DATA	260 D EP-4	310 HP EP-5
Lifting capacity (ft-lbs)	158.724	187.709
Maximum Outreach	41'4"	49'3"
Lifting capacity at max lbs	3.483	3.351
Control system	D-Drive remote control system	HP-Drive remote control system
Crane Weight w/ Stabs	7.198	8.102